



Bluelon BlueReader BRW-200



Wireless access control:

- By Bluetooth™ device
- Wiegand Interface
- Distance up to 100 feet
- Discrete design
- Aux. for alarm

Advanced features:

- Encrypted communication
- Pin code via Bluetooth™ device

Installation / Service:

- No external card reader
- No mechanical reader
- Simple programming
- No PC required

BlueReader BRW-200 is a new type of wireless access control reader with legacy Wiegand interface which is capable of opening "existing doors" in new exciting ways providing a comfortable access controlled environment where user friendliness, reliability and design have been put in focus.

Upgrade your existing, Wiegand "credit card" based door or gate system to a modern and encrypted Bluetooth™ enabled access system which will only accept personnel with Bluetooth™ enabled mobile phone/PDA's or Bluelon's tag to gain access through your access ways. You may either get instant access, without further verification, or be requested to authenticate yourself with a predetermined pin code depending on your personal or company policy.

In case authentication is required the user will be prompted for such on the Bluetooth™ enabled device.

The Bluetooth™ wireless technology operates locally and is therefore free to be used without having to pay any additional charges from e.g. the mobile service provider.

BlueReader BRW-200 is typically installed in a location inside the guarded area where it is normally invisible to the user.

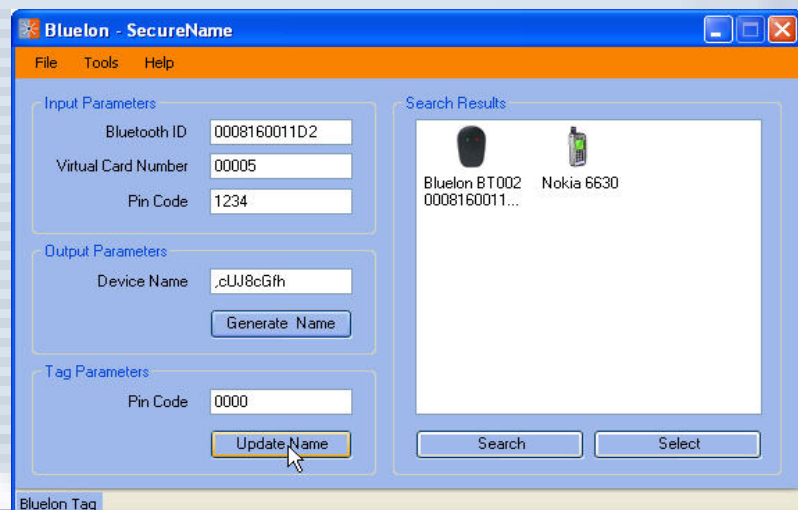
BlueReader BRW-200 is equipped with screw terminals for existing provided 10-24 volt AC or 12-30 volt DC power supply.

BlueReader BRW-200 identifies Bluetooth™ devices by the unique 15-digit (48 bit) Bluetooth™ identifier and transmits, in the default configuration, this ID to the card reader controller, and may additionally be authenticated by the use of associated pin code for higher security.

BlueReader can be configured to transmit an alternative standard 26 bit format, where the virtual card number is calculated using the SecureName application tool.

SecureName is a software package for generating encrypted secure parameters used to enable mobile phones to interact with legacy card based access control systems. A Bluetooth™ device, accepted by the

SecureName



system, will be capable of activating the door from an approximately distance up to 50 meters (150 feet), and the user will be able to pass through the door without any further action.

BlueReader BRW-200 operating range can be adjusted from the firmware and directional control can be achieved by choice of optional external antenna (BRW-200EA), this enables applications where multiple doors exist in a confined area.

BlueReader BRW-200, in summary, makes it possible to upgrade legacy Wiegand compatible access system to "state of the art" technology at a low cost compared with a total system replacement.

Bluelon

Nattergalevej 6, 2400 Copenhagen NV, Denmark. Phone: +45 3321 4012 Fax: +45 3321 4014, Mail: sales@bluelon.com



Bluelon BlueReader BRW-200

Technical spec. BRW-200:

Wireless Range:

0,5 - 50 Meter

Inputs:

D1: Pin Enable, reference to OV
D2: Function (not in use)

Outputs:

Aux 1: Output Max 1 Amp. / 24 Volt
Aux 2: Output Max 1 Amp. / 24 Volt

D3: Wiegand Data - Open Collector, reference to OV

D4: Wiegand Data + Open Collector, reference to OV

Dimensions:

H=130 mm, W=65 mm, D=20 mm

Supply voltage:

10 - 30 Volt DC
8 - 24 Volt AC

Power consumption:

v/ 12 Volt: 120 mA
v/ 24 Volt 60 mA

SecureName:

System requirements

CPU min: 500 MHz
Free HD: 50 MByte

Ram min: 128 MByte

Supported Operating Systems: Windows XP

Available Bluetooth™ devices

Virtually all Bluetooth™ devices can be used with the BlueAccess access control system. Only a few devices has been found not to meet the Bluetooth™ standard set forth by the Bluetooth™ special interest group found at www.bluetooth.org.

Please see www.bluelon.com for up to date list of non-compliant devices.

Bluetooth™ facts:

Bluetooth™ is developed by Ericsson and is a short-range (up to 100 m.) wireless communications standard. Bluetooth™ is designed to communicate with devices such as mobile phones, PDA's, headsets, laptops. The Bluetooth Special Interest Group (SIG) has announced that the Bluetooth market has passed the impressive milestone of 9.5 million Bluetooth units shipping per week. In May 2005, the shipment figures were 4.75 million per week according to IMS Research and in September 2005 - only four months later - this figure had doubled, exceeding even the most optimistic analyst projections.

Rev. 09/07-06

Bluelon

Nattergalevej 6, 2400 Copenhagen NV, Denmark. Phone: +45 3321 4012 Fax: +45 3321 4014, Mail: sales@bluelon.com